

Fleas lay eggs 24 - 48 hrs after mating and can lay 40 -50 eggs a day.



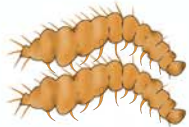
# Life Cycle Of FLEAS



Pupae emerge from the cocoon after 5-10 days or they can wait up to a year.



Eggs Hatch within 2-3 days.



Larvae molt 2-3 times before creating a cocoon.



One female flea's offspring can multiply to **250,000 NEW FLEAS**



A Pair Of Fleas Can Produce 400-500 Offspring In Their Lifetime



**24 HOURS**  
40 -50 eggs are produced

If untreated, adult fleas are able to live on their host for up to

**3 MONTHS** or more



Pupae can wait up to a **YEAR** to **HATCH** until the conditions are correct.



A flea can **JUMP 8 inches high** and **30K TIMES** without stopping



800.344.6337  
714 5<sup>th</sup> Street  
Fairbury, NE 68352  
[www.LambertVetSupply.com](http://www.LambertVetSupply.com)